

Peak Integration Software for LabSolutions Insight™

Peakintelligence™ for GCMS



GCMS-TQ 8050NX

Equipped with New AI Peak Integration Algorithms



Peakintelligence for GCMS is equipped with new AI peak integration algorithms that significantly shorten the time needed for peak integration in the GC/MS/MS quantitative processing work sequence.*1

AI algorithms trained with peak integration know-how*2 provide peak integration on par with that of an experienced user, so configuring or adjusting parameters is not required.

In addition, the software can correctly detect low-concentration samples.

*1 Patent pending

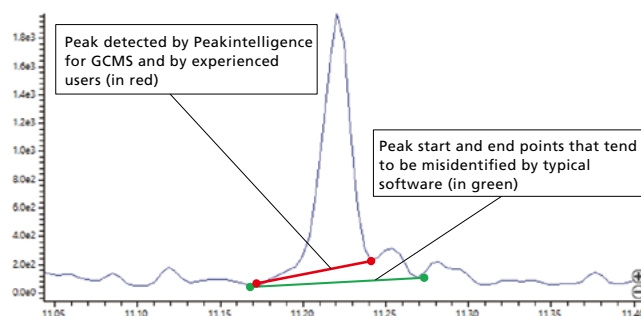
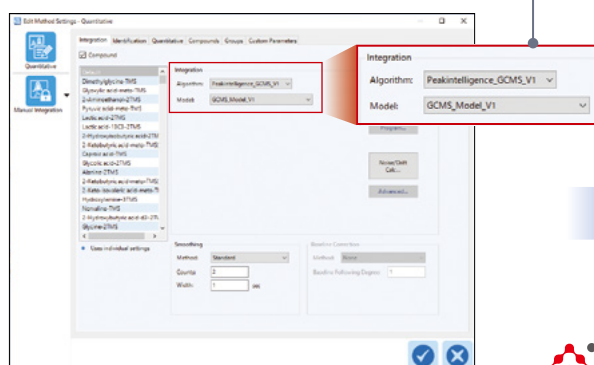
*2 Developed by Shimadzu in cooperation with the Osaka University Shimadzu Omics Innovation Research Laboratories.

Parameter-Free Peak Integration

The AI assists with the detection of chromatogram peaks and provides data analysis on par with that of an experienced user.*3

The AI was trained with examples of peak integration by experienced users, eliminating the need to adjust parameters.

Just select an algorithm and model.
Complicated parameter adjustments
are not required.



*3 The software is not equipped with a function to learn from a user's peak data.



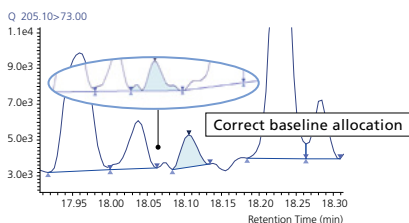
Automated support functions utilizing digital technology, such as M2M, IoT, and Artificial Intelligence (AI), that enable higher productivity and maximum reliability.

Peakintelligence for GCMS

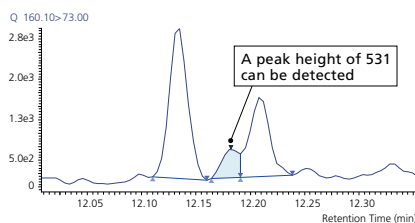
Capable of Analyzing Complicated Chromatograms with Ease

Peakintelligence for GCMS can detect peaks without adjusting parameters even in complicated chromatograms that are difficult to analyze with conventional algorithms.

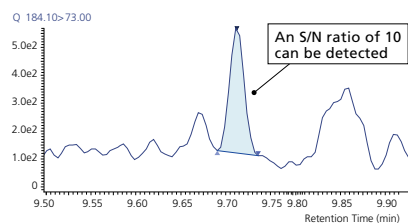
Correctly integrates even when the baseline allocation is difficult



Even small peaks can be detected



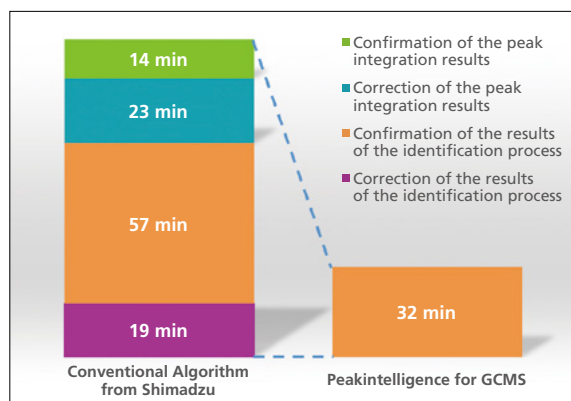
Even peaks with a low S/N ratio can be detected



Shortens the Time Required for Quantitative Processing Work Sequences

In conventional quantitative processing, peak integration results are checked and corrected visually, after which the results of the identification process (selection of target peaks) are checked and corrected visually.

Peakintelligence for GCMS, in contrast, only requires confirmation of the results of the identification process, so the time required for quantitative processing per sample is shortened to approximately 1/4 the conventional time (assuming the metabolite data of 475 components in 1 sample).



• Results with Shimadzu test data

- This product was evaluated using MRM data analyzed with Smart Metabolites Database™ Ver. 2 and GC/MS Residual Pesticides Database Ver. 2.
- Due to the characteristics of the techniques used, it might not be possible to provide an explanation of the integration results.

License Types and Expiration Dates

License Type	Base License	Annual License
	Peakintelligence for GCMS can be used with this license.	This provides product updates
Starter pack	Perpetual	3 years
1-year license	—	1 year

- In the first year, be sure to purchase the starter pack.
- From the 4th year, purchase a 1-year license annually.

Operating Environment

OS	Microsoft® Windows® 10 Professional 64-bit
Software	LabSolutions Insight DB GCMS Ver. 4.0 SP4 or later

- LabSolutions DB GCMS (Ver. 6.116 SP1 or later) is required for operation.
- Peakintelligence for GCMS operates in LabSolutions Insight processing mode.

Peakintelligence, LabSolutions Insight, GCMS-TQ, the Analytical Intelligence logo, Smart Metabolites Database and Smart Pesticides Database are trademarks of Shimadzu Corporation and/or affiliated companies in Japan and/or other countries. Microsoft and Windows are trademarks or registered trademarks of Microsoft Corporation in the United States and/or other countries.



Shimadzu Corporation

www.shimadzu.com/an/

For Research Use Only. Not for use in diagnostic procedures.

This publication may contain references to products that are not available in your country. Please contact us to check the availability of these products in your country.

Company names, products/service names and logos used in this publication are trademarks and trade names of Shimadzu Corporation, its subsidiaries or its affiliates, whether or not they are used with trademark symbol "TM" or "®".

Third-party trademarks and trade names may be used in this publication to refer to either the entities or their products/services, whether or not they are used with trademark symbol "TM" or "®".

Shimadzu disclaims any proprietary interest in trademarks and trade names other than its own.

The contents of this publication are provided to you "as is" without warranty of any kind, and are subject to change without notice. Shimadzu does not assume any responsibility or liability for any damage, whether direct or indirect, relating to the use of this publication.