

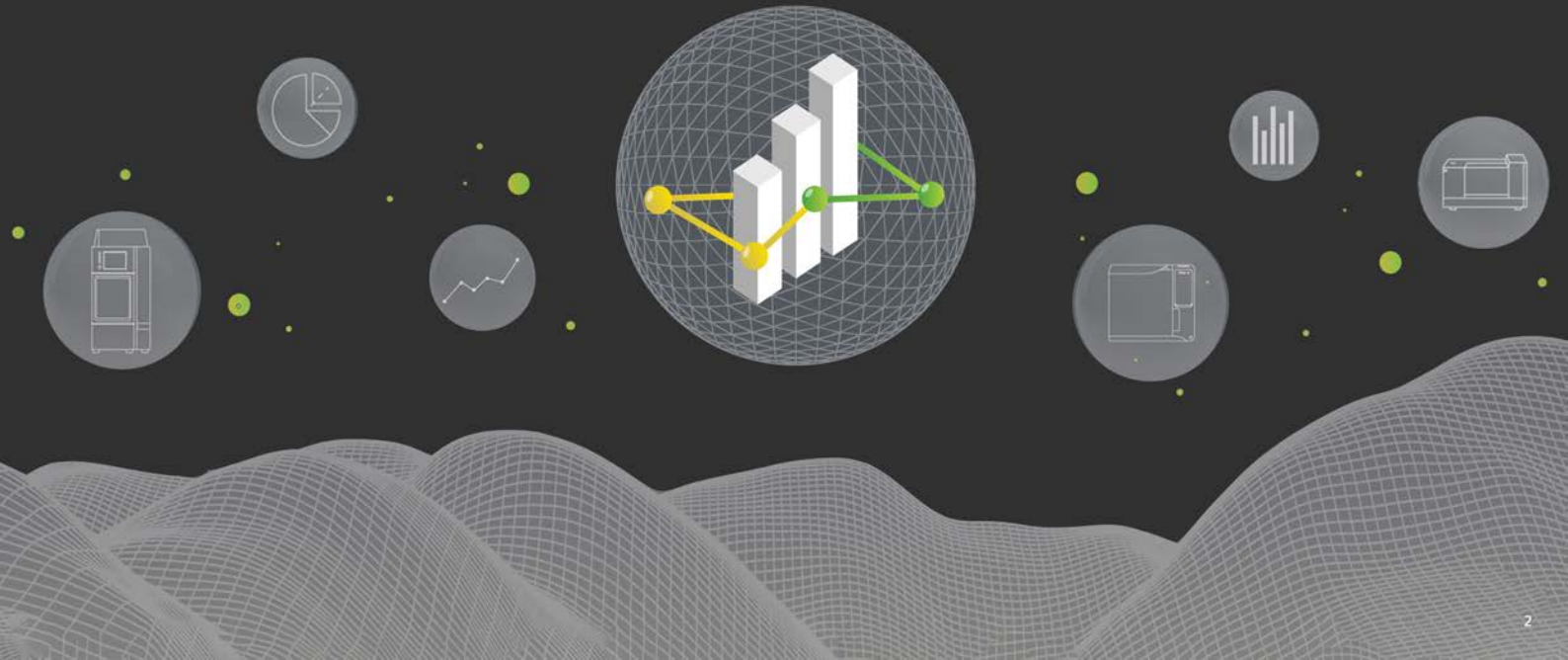
LabSolutions **BiX 2.0**

Brilliant | **i**lluminate | **eX**panse

Accelerate your Laboratory Digital Transformation (Lab DX)

Brilliant | illume | eXpanse

LabSolutions BiX 2.0 is a Brilliant application that
illumes greater possibilities of performance of your laboratory and
enables to spread your Enterprise Digital Footprint to greater eXpanse.



LabSolutions BiX 2.0 is the first-of-its kind web-based dashboard application that enables diverse category of users (lab chemists, managers or senior management & CXOs) to make informed decisions based on detailed and critical analysis of the productivity and efficiency of all assets in the laboratory, be it instruments or the people operating them.

LabSolutions BiX 2.0 collects data from all kinds of Analytical instruments, processes the data Analytically or logically and showcases the analysed output into various Analytics reports.

LabSolutions BiX 2.0 offers advanced analytics at your fingertips and is built on a robust Micro-Service Architecture (MSA) and features responsive intuitive display and Progressive Wave Application (PWA) that provides valuable insights along with complete ease of use.

How **LabSolutions BiX 2.0** will transform your laboratory experience?

- **Brilliant** - LabSolutions BiX offers a brilliant experience to all users, especially **lab chemists**, to enrich their day-to-day laboratory activities.
- **illume** - LabSolutions BiX provides accurate and timely laboratory analytics that enables **managers** to illuminate greater possibilities of instruments and users performance.
- **eXpanse** - LabSolutions BiX spreads the digital footprint of laboratories, enabling **senior management** and **CXOs** to make better business decisions.



6291.727 Hours

91

26

44240

Instrument Usage

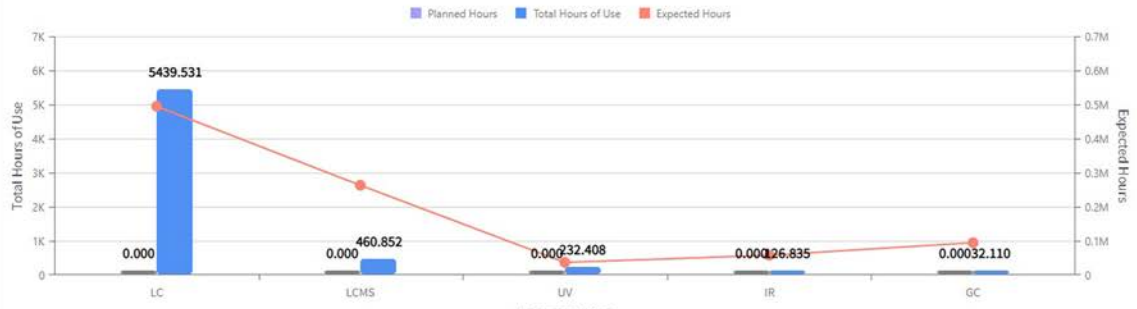
Active Users

Active Instruments

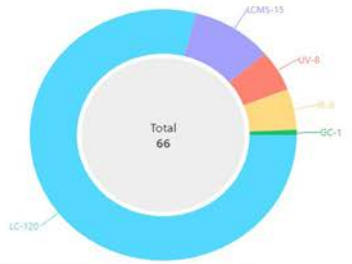
Samples Analysed

- Instruments
- Users
- Messages
- System
- Audit

Hours Used for Instrument Type



Projects for Instrument Type



Batches Run for Instrument Type



Brilliant - A brilliant experience to enrich your laboratory

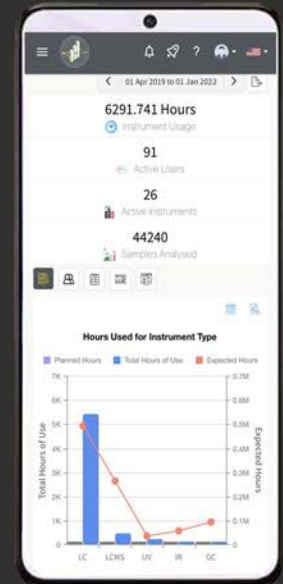
LabSolutions BiX 2.0 offers a brilliant experience with its interactive interface and web-based architecture. Data is collected automatically, computed logically and showcased asthetically as interactive dashboards to provide ease of use to even the most novice users.

Features:

1. Intuitive Graphical User Interface (GUI).
2. Web-based application with Micro-Service Architecture (MSA).
3. Interactive Product Tour & Informative Reporting.
4. Enhanced Instrument Dashboard.
5. Streamlined Instrument Booking Calendar.

Benefits:

1. "What You See Is What You Get" interface enables multi-tasking and considerable ease of use to even novice or non-technical staff.
2. Users can login to LabSolutions BiX from anywhere in the world and also work from home using secured access, from any smart device (PC, Tablet or Phone etc), whether it is iOS or Android.
3. While new users experience a confident onboarding with the help of a simple walkthrough by the interactive Product Tour, more seasoned users have the ability to generate dashboard specific reports in diverse formats as per their needs.
4. Get detailed data about instrument usage (Expected vs Actual usage) and optimise with help of visual analytics.
5. Completely digitise your instrument usage plan and easily export or sync your instrument booking calendar with smart devices.



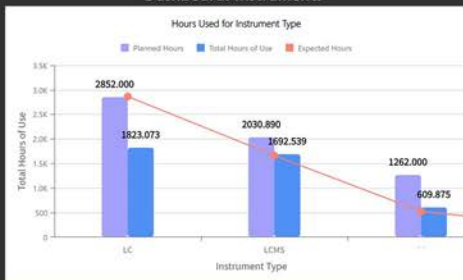
illumine - Illuminate greater possibilities of performance with accurate and timely laboratory analytics

LabSolutions BiX 2.0 provides accurate and timely laboratory insights via multiple dashboards featuring instrument utilisation, user loads for batch sample analysis, and important messages including errors and warnings and system management activities. Audit Trail review helps managers to monitor and verify the quality and reliability of data to address Data Integrity concerns.

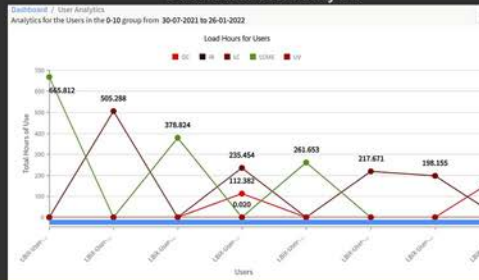
Features:

1. Accurate lab insights provides detailed analytics of Instrument utilisation, User activities, Samples analysed, Batches run, and Project load among others.
2. Audit Dashboard enables you to conduct quick Audit Trail and Audit Review function simplifies analysis of huge data & related logs.
3. Real-time Notifications and Messages prompt you to focus on the important tasks.
4. All-in-One View of all instruments' status.
5. Instrument Information Management.
6. Digital Customised Logbook.
7. Swift QC Check.
8. Enhanced Reporting.

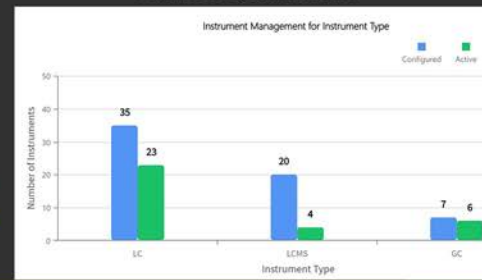
Dashboard: Instruments



Dashboard: User Analytics



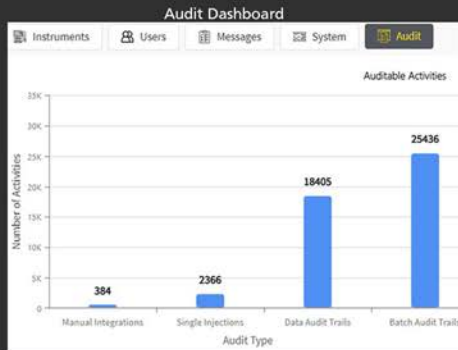
Dashboard: System Analytics



illume - Illuminate greater possibilities of performance with accurate and timely laboratory analytics

Benefits:

1. Detailed accurate data insights about the laboratory and user performance helps to better manage resources and also allocate them accordingly for various projects thus leading to optimum utilisation.
2. Audit Dashboard effortlessly allows to differentiate between System and User's Audit data based on Audit Trail summary, reviews and version comparisons. Audit Review function displays key metrics and metadata about Method, Batch, Manual Integration, System Admin etc in a single viewing tool, to help the user face regulatory challenges with confidence.
3. System management dashboard helps the IT team to effectively monitor and administer the laboratory software systems.
4. Get detailed holistic overview of instrument bookings in a single, shared calendar, accurately track instrument usage costs and gain insights into lab equipment usage every day.



Instrument Information Management

Instrument Information Documents Information Rules and Safety Features Pricing Inform.

Type * LCHS Name * LBX-instrument-147

Model * 8050 Room * R201

Country * Singapore Person Incharge * Administrator

Assigned Users * Administrator, DemoUser, DemoUser

Transportable Active Calibrated

illume - Illuminate greater possibilities of performance with accurate and timely laboratory analytics

Benefits:

5. Efficiently manage all instruments, maintenance, calibration and daily usage schedule, all at the same place. Precisely define your lab's equipment booking rules and guidelines, and easily control or monitor the accessibility of instruments.
6. Digital Logbook enables customised instrument booking logs (based on the number and type of instruments or type of labs and users) and allows digital insertion of comments and helps conduct reviews with ease of use.
7. Swiftly check for instrument readiness and accurately review the System Suitability Test (SST) results for various instruments.
8. Create custom reports from the dashboard, based on additional parameter selections. Quick report creation functions are also available for specific instruments.

Digital Logbook

Logbook

Type: Name: User:

Select... Select... Select...

Type	Name	Model	Person Incharge	Lab
(All)	Q	Q	Q	Q
LC	LBIX-Instrument-47	2030	Administrator	BioAnalyt
LC	LBIX-Instrument-47	2030	Administrator	BioAnalyt
LC	LBIX-Instrument-47	2030	Administrator	BioAnalyt
LC	LBIX-Instrument-47	2030	Administrator	BioAnalyt

QC Check

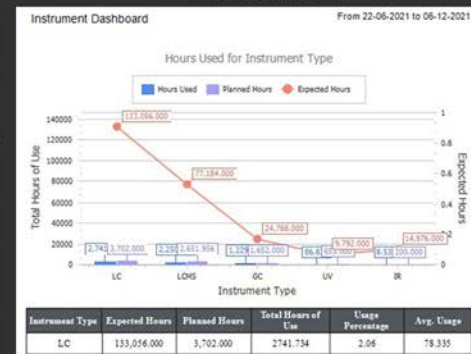
System Suitability

Instruments: * Parameter:

LBIX-Instruments-49 Area, Height, Number of Theoretical Plate, Retention Time

	MS-1 Area	MS-1 Height	MS-1 Number of Theoretical Plate	MS-1 Retention Time	MS-1
* 25-11-2021	0 (0.000)	11382532 (6.524)	0 (0.000)	0.894 (0.282)	
* 24-11-2021	0 (0.000)	11382532 (6.524)	0 (0.000)	0.894 (0.282)	
* 23-11-2021	0 (0.000)	11382532 (6.524)	0 (0.000)	0.894 (0.282)	
* 21-11-2021	789060 (0.000)	0 (0.000)		0.39 (0.000)	
* 20-11-2021	0 (0.000)	11382532 (6.524)	0 (0.000)	0.894 (0.282)	

Enhanced Reporting



expanse - Spread the digital footprint of your laboratories

LabSolutions BiX 2.0 enhances the performance of your laboratory and gives you the opportunity to spread your Enterprise Digital Footprint across a greater expanse, to a wide variety of instruments and software applications.

Features:

1. Enhance your LabSolutions CS network with powerful analytics and other modules/applications.
2. Connect with various analytical instruments and laboratory software.
3. Expand and connect your analytics to multiple laboratories and locations.

Supported Shimadzu Instruments:
HPLC, GC, LCMS, UV, FTIR.

Supported Shimadzu Software:
LabSolutions CS, LabSolutions DB,
LabSolutions LCGC, LabSolutions LCMS.



expanse - Spread the footprint of your laboratory and its analytics

Benefits:

1. Powerful visualisation and quick dashboards of big metadata from the LabSolutions CS network helps in making performance-based business decisions.
2. An enterprise solution that can be scaled with diverse analytical instruments, software and modules to improve productivity of laboratories and ensure business continuity.
3. Addresses the growing needs of customers to expand their enterprise digital footprint to multiple locations with cost-effective operations.



Customer Testimonials



"I would like to congratulate Shimadzu for their new brilliant software. LabSolutions BiX gives us the power to keep an accurate track on instrument and staff performance even as we Work from Home. We are particularly happy to have powerful visualisation and quick dashboards, which help us to make performance-based business decisions."

- **Mr Reza H Ismail, Managing Director, Nori Pharma, Malaysia**



"As a testing lab we are always reliant on accurate data and LabSolutions BiX helps us to precisely show the status of our laboratories. We are very impressed with the expandable modules as our labs are always evolving. We can easily expand our digital footprint using this software. We are also very thrilled to use the intuitive GUI, which certainly enriches our total laboratory experience."

- **Mr Chandra Sekhar, President, Perfomics Analytical Labs, India**



LabSolutions BiX 2.0

Brilliant I illume I eXpanse

Accelerate your Laboratory Digital Transformation (Lab DX)

www.shimadzu.com.sg/labsolutionsbix

 **SHIMADZU**

Shimadzu (Asia Pacific) Pte Ltd

www.Shimadzu.com.sg/an

For Research Use Only. Not for use in diagnostic procedures.

This publication may contain references to products that are not available in your country. Please contact us to check the availability of products in your country.

The content of this publication shall not be reproduced, altered or sold for any commercial purpose without the written approval of Shimadzu. Company names, products/service names and logos used in this publication are trademarks and trade names of Shimadzu corporation, its subsidiaries or its affiliates, whether or not they are used with trademark symbol "TM" or ®. Third-party trademarks and trade names may be used in this publication to refer to either the entities or their products/services, whether or not they are used with trademark symbol "TM" or ®. Shimadzu disclaims any proprietary interest in trademarks and trade names other than its own.

The information contained herein is provided to you "as is" without warranty of any kind including without limitation warranties as to its accuracy or completeness. Shimadzu does not assume any responsibility or liability for any damage, whether direct or indirect, relating to the use of this publication. This publication is based upon the information available to Shimadzu on or before the date of publication, and subject to change without notice.