



# The **New Normal** for Analytical Labs

Remote Operations and Automation



ANALYTICAL  
INTELLIGENCE

# Intelligent Labs of Today

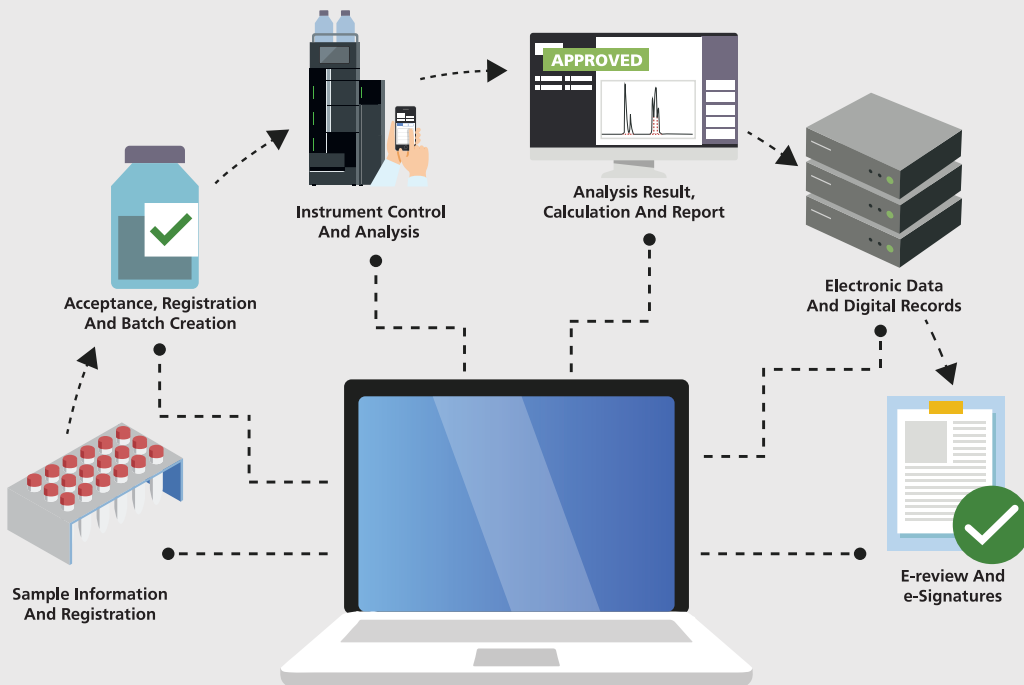
Automation And Remote Operation | LabSolutions CS And LIMS



**Request for  
Demonstration**

**This is no longer 'the lab of future', this should be your lab now!**

# Digitalisation is for All



No Compromise On Productivity And Compliance For **Remote Operations, Analysis And Data Management** Using Shimadzu **LabSolutions CS And LIMS**.



**Pharma/  
Biopharma**



**Chemical**



**Academia/  
University**



**Food /  
Environmental**



**Testing Labs**



**Manufacturing**

## **Increase Productivity**

- Integrated sample and instrument analysis workflow
- Real time monitoring of lab resources
- Analytics and trends for quick and effective decision making

## **Increase Efficiency**

- System driven workflow
- Centralized control of various types of analytical instruments, with data processing and review capability in client server environment
- Automatic calculations and generation of reports

## **Data Integrity**

- Maintain and manage data in a protected environment
- Adhere to regulatory guidelines such as 21CFR Part 11
- Centralised back up mechanism eliminating data loss

# Nexis GC-2030

LEARN MORE ►

## Intelligent Automation for *Chromatography*

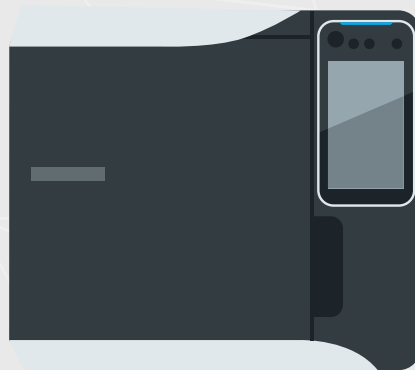
FROST & SULLIVAN

2017 NEW PRODUCT  
INNOVATION AWARD

Nexis GC-2030 & Headspace HS-20 along with LabSolutions will assist in remote operations! Superior performance of HS-20, quick stabilization of GC oven, and the universal detection by BID — each helps to ensure reproducible results at all times.

- Diagnoses of Instrument Operating Status
- ClickTek™ making routine analysis convenient
- Intelligent Flow Controller with exceptional reproducibility
- Faster analysis with Hydrogen carrier gas
- World's Highest\* Sensitivity and Reproducibility

*\*As of March 2020, according to a Shimadzu survey*



# Nexera Series

[LEARN MORE ►](#)

## Intelligent Automation for *Chromatography*

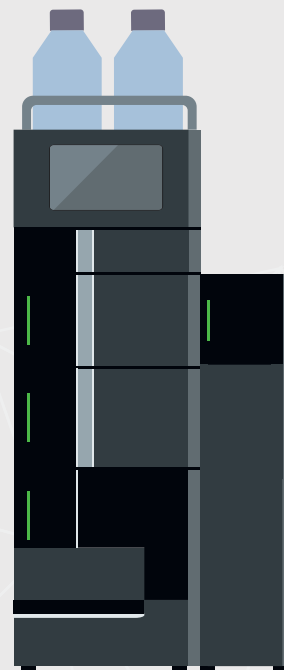
Experience Compliance and Intelligence together in New Nexera Series.  
Remote operations and data analysis is no more a wish but a reality!

Automated support functions utilizing digital technology, such as M2M, IoT, and Artificial Intelligence (AI), that enable higher productivity and maximum reliability.

- Auto Start-up to Shut-down
- Automatic Diagnostic and Recovery
- Flow Pilot for Column Protection
- Mobile Phase Monitoring (MPM)
- Remote Monitoring and Integrated Lab Management



reddot award 2019  
winner



# GCMS-TQ8050 NX

LEARN MORE ►

**UFMS**  
ULTRA FAST MASS SPECTROMETRY

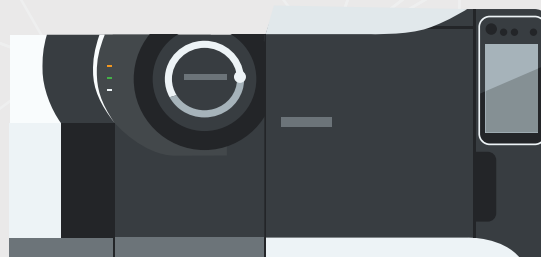
## Intelligent Automation for *Mass Spectrometry*

The Shimadzu triple quadrupole GCMS-TQ8050 NX is capable of performing unprecedented quantitative GC-MS/MS analyses of ultra-trace amounts, down to the femtogram level.

Accelerate and automate your workflows using Smart/Quick Databases and Automatic adjustment of Retention Time (AART) function. Get smarter with GCMS-TQ8050 NX!

Use pre-optimized quantitative and qualitative screening database from Shimadzu for quick optimisation, customization and set-up of analysis.

- Active-Time Management™ for better productivity
- ClickTek™ making routine analysis convenient
- Polymode Ionisation to expand chemical research option
  - BEIS to maximize ionization efficiency
  - Smart EI/CI source combined with DI | "DUIS+"
  - SMCI combined with DI | "SMCI+"
- Off-axis ion optics with shielded detector





# LCMS-8060NX

[LEARN MORE ►](#)

UFMS  
ULTRA FAST MASS SPECTROMETRY

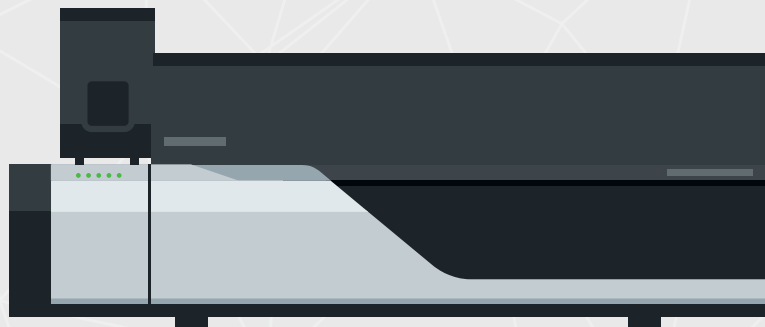
## Intelligent Automation for *Mass Spectrometry*

The Culmination of Shimadzu's Expertise in Triple Quadrupole MS, Ultra Fast Mass Spectrometry ensures better data quality and robust analysis without any compromise on sensitivity.

Seamlessly utilize intelligent functionalities from MRM optimization to Quantitative calculations — ensuring you get more from instrument than just analysis result, while you work from home!

- Robustness and Ease of Use in High Sensitivity Analysis
- IonFocus™ unit
- Ultra-fast power supply
- UF-Qrray™
- UF-Lens™

Reduce development time and automate analysis using ready to use application Method packages with quick MRM development and quantitation using LabSolutions MRM connect



# IRSpirit

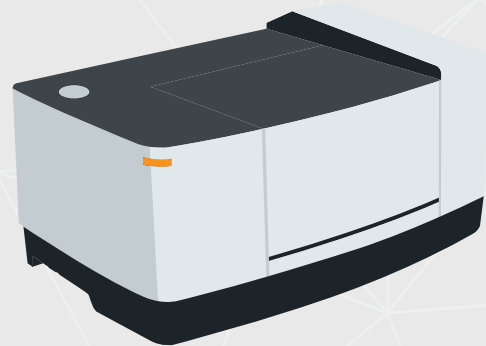
LEARN MORE ►

## Intelligent Automation for *Spectroscopy*

Despite their small footprint, smaller than an A3 size sheet of paper, these models have been engineered with a wide sample compartment that accommodates existing accessories from Shimadzu and other manufacturers. This capability makes them the smallest (installation footprint) and lightest FTIR spectrophotometers in the world that can be used with optional products from other manufacturers.

IR Pilot with 4 ready workflows and 23 applications will allow monitoring, automated analysis and reporting.

- Dedicated IR Pilot Program Ensures Immediate and Easy System Operation
- High Reliability Ensures the System Can Be Introduced with Confidence
- Space-Efficient with High Expandability



# UV-i Selection [LEARN MORE ►](#)

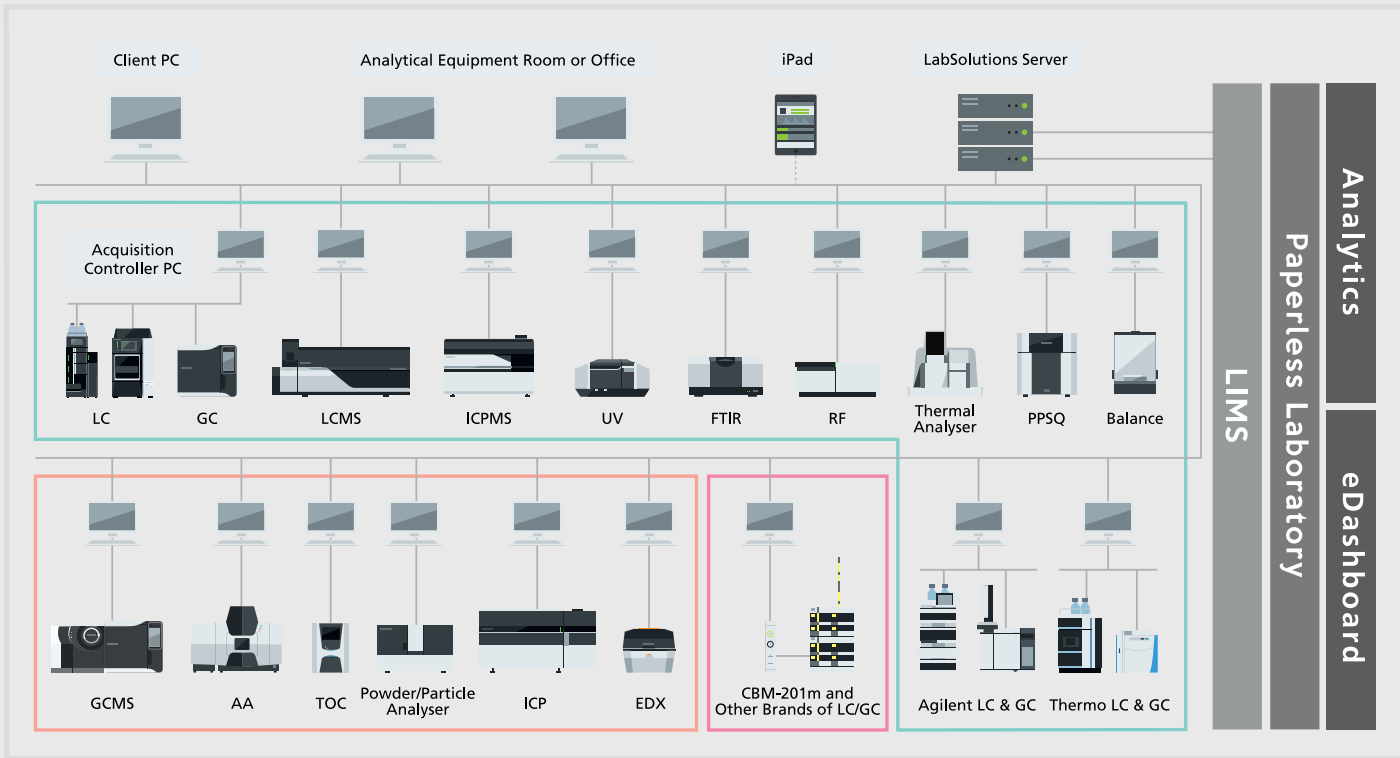
## Intelligent Automation for *Spectroscopy*

Automate UV analysis using complete solution for automatic liquid analysis for with newly-updated ASX series autosamplers to offer repeatable measurements suitable for all types of laboratories.

- With smoother operability and improved productivity of data analysis operation!
- Stronger data management with automatic measurement and control
- Ultra high-speed scan which can acquire a spectrum in a few seconds, with the lowest level of stray light and noise in its class
- In combination with LabSolutions™ DB/CS, comply with FDA 21 CFR Part 11 and PIC/S GMP guidelines
- Validation functions enable checks in accordance with Pharmacopeia (JP, USP, and EP) to be performed easily



# Integrated Informatics Biosphere



Shimadzu brings a wide range of laboratory workflows that includes different types of instruments and informatics solutions to address the laboratory challenges with Data Management, Sample Management, Consolidated & Automated Reports, QA Process and Regulatory Compliance with paperless environment. The unique combination of LabSolutions CS Network with Expandable LIMS and other products provides an integrated solution for entire laboratory.



CaliberLIMS



CaliberQAMS



CaliberEBRMS



CaliberDMS



NICHELON5



CaliberAPQR

## Shimadzu LabSolutions CS

*Total Laboratory Network*

- World's only network for Chromatography, Spectroscopy, Mass Spectrometry and other laboratory instruments
- Lab Managers - Centralised Data Backup, User Authentication, Security Policies, Access Rights and Electronic Signatures
- Lab Operators - Unified platform for Data Processing, Reporting & Electronic Signatures

## Caliber Product Suite

*Paperless Laboratory Solutions*

- Integrated Product Suite with LIMS | QAMS | DMS | eBRMS for complete laboratory digitalisation
- Flexible add-on modules for easy implementation and Total Solutions for Quality, Automation and Compliance
- True Paperless Laboratory with LabSolutions CS and integration of all laboratory instruments

**Request for Demonstration**

Find us on



LinkedIn



Contact us

<https://www.shimadzu.com.sg/sap/contact/index.html>



For Research Use Only. Not for use in diagnostic procedures. This publication may contain references to products that are not available in your country. Please contact us to check the availability of these products in your country. Company names, product/service names and logos used in this publication are trademarks and trade names of Shimadzu Corporation or its affiliates, whether or not they are used with trademark symbol "TM" or "®". Third-party trademarks and trade names may be used in this publication to refer to either the entities or their products/services. Shimadzu disclaims any proprietary interest in trademarks and trade names other than its own. The contents of this publication are provided to you "as is" without warranty of any kind, and are subject to change without notice. Shimadzu does not assume any responsibility or liability for any damage, whether direct or indirect, relating to the use of this publication. Caliber products are trademark of Caliber Infosolutions Inc.